

cashmere
& **COPPER**

MOOD IDEA

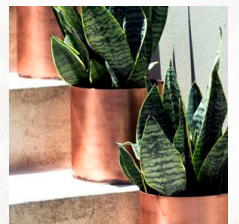
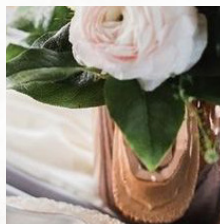
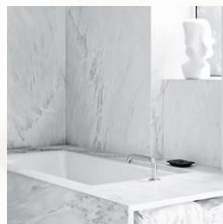
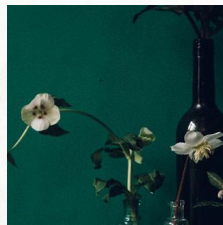
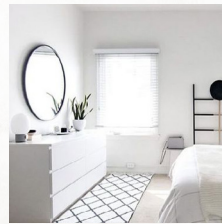
Autumn, boots, walking in Amsterdam, leaves falling,
long wavy hair, cozy sweater, carrying fresh flowers

Cold, gray day, candles, cozy at home,
comfy lounge set, clean fresh decor

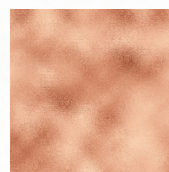
Cooking in the kitchen, comfy sweater,
surrounded by loved ones, clean white decor

Marble, copper, black, emerald green, blush

MOOD & PALETTE



STORM | EMERALD | BLUSH | COPPER | MARBLE



COLOR PALETTE



STORM

#343337

r 52, g 51, b 55

c 71, m 65, y 59, k 56

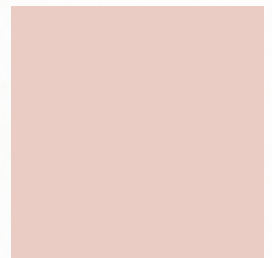


EMERALD

#2E5B51

r 46, g 91, b 81

c 81, m 45, y 64, k 32

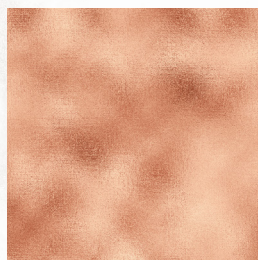


BLUSH

#E9CCC5

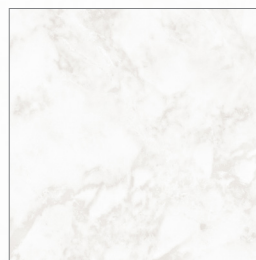
r 233, g 204, b 197

c 7, m 20, y 17, k 0



COPPER

texture



MARBLE

texture

TYPEFACE

cashmere
& **COPPER**

cashmere

adorn garland regular

& **COPPER**

mrs. eaves ot bold, 200 tracking

typefaces available through adobe typekit subscription

LOGO

MAIN LOGO



COLOR VARIATION STORM



COLOR VARIATION EMERALD



COLOR VARIATION BLUSH



BRAND MARK

MAIN BRAND MARK



BRAND MARK VARIATIONS



SOCIAL ICONS



BLOG BUTTONS

HOME

SHOP

LIFESTYLE

PRIMP

DINE

CONTACT

CASHMERE & COPPER REBRAND DESIGNED BY
KAYDEEROSEGILSON.COM



KAYDEE
ROSE
GILSON